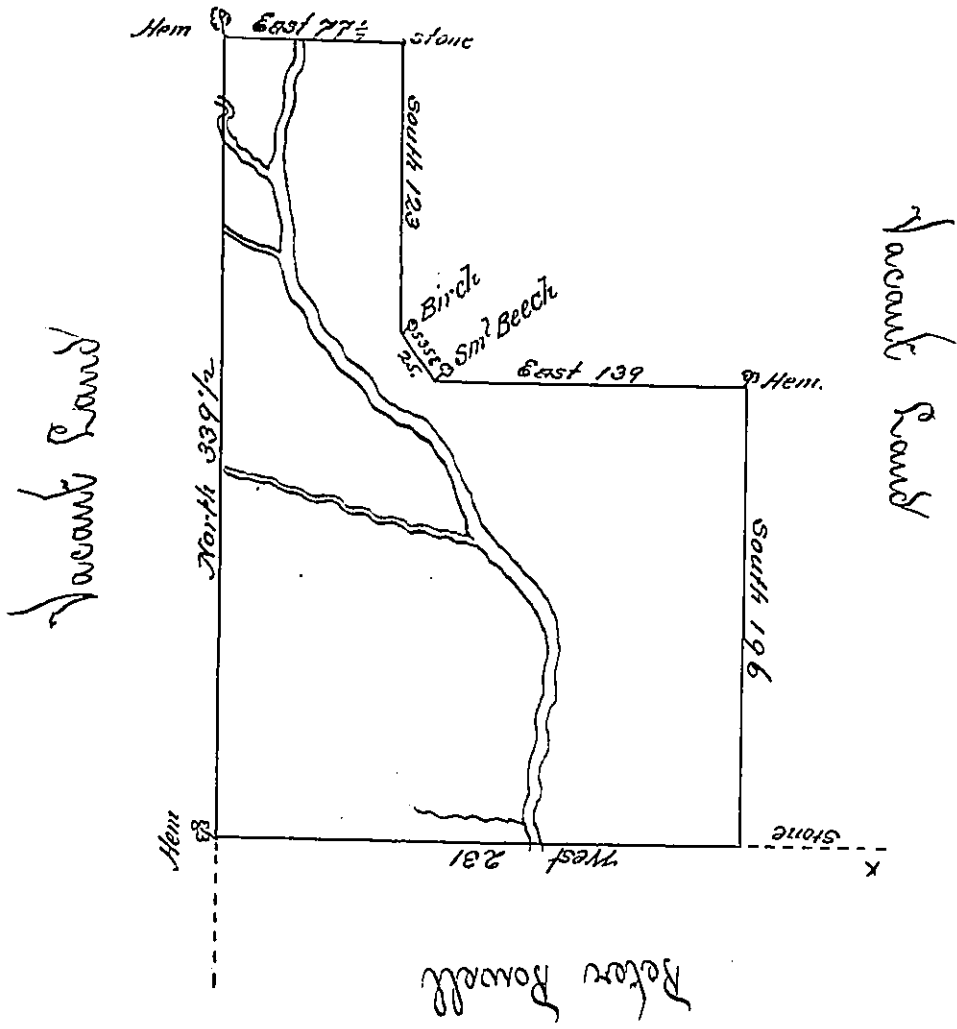


Vacant Land



By virtue of a Warrant dated the 1st July 1784 surveyed the 9th November 1784 to Samuel Barnes the above Described tract of Land situate on a Northerly branch of Washope Creek in Northampton County Containing Three hundred and thirty three Acres twenty six perches and the Allowance of six pCent &c^a

To John Lukens Esquire }
Surveyor General }

J Geo Palmer
22

IN TESTIMONY that the above is a copy of the original remaining on file in the Department of Internal Affairs of Pennsylvania, made conformably to an Act of Assembly approved the 16th day of February, 1833, I have hereunto set my Hand and caused the Seal of said Department to be affixed at Harrisburg, this ninth day of November 1903.

Geo. P. Rowell
Secretary of Internal Affairs.